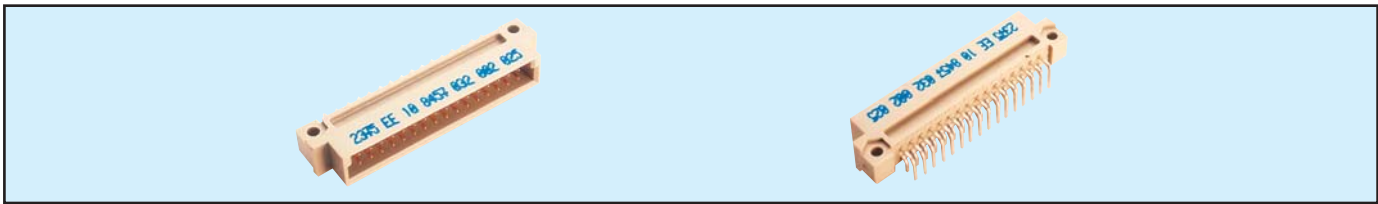


# Male Style 1/2 B Press-Fit



## Series 8458 – 2 rows (2 x 16)

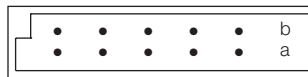


| Contact Design and Termination Length            | Number of Contacts | Loading Description   | Part Number Performance classes according to DIN 41612 |                     |
|--|--------------------|-----------------------|--|---------------------|
|  |                    |                       | II   | I                   |
| for ≥ 2.4 mm PCB's<br>5.3 mm (Y)<br>Right Angled | 32                 | a + b fully loaded    | 10 8458 032 001 025                                    | 10 8458 032 001 049 |
|  | 16                 | a loading only        | 10 8458 032 001 027                                    | 10 8458 032 001 051 |
|  | 30 + 2             | fully loaded + ground | 10 8458 032 101 025                                    | 10 8458 032 101 049 |
| for 1.6 mm PCB's<br>3.0 mm (Y)<br>Right Angled   | 32                 | a + b fully loaded    | 10 8458 032 031 025                                    | 10 8458 032 031 049 |
|  | 16                 | a loading only        | 10 8458 032 031 027                                    | 10 8458 032 031 051 |
|  | 30 + 2             | fully loaded + ground | 10 8458 032 131 025                                    | 10 8458 032 131 049 |

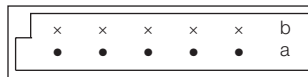
NB: Alternative Prefix Variations Available: 12, please refer to Page 10.

Additional Plating & Loading Variations: Please contact your local AVX sales office or distributor.

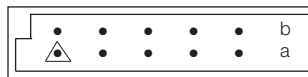
### LOADING DESCRIPTION



32 contacts, rows a + b fully loaded



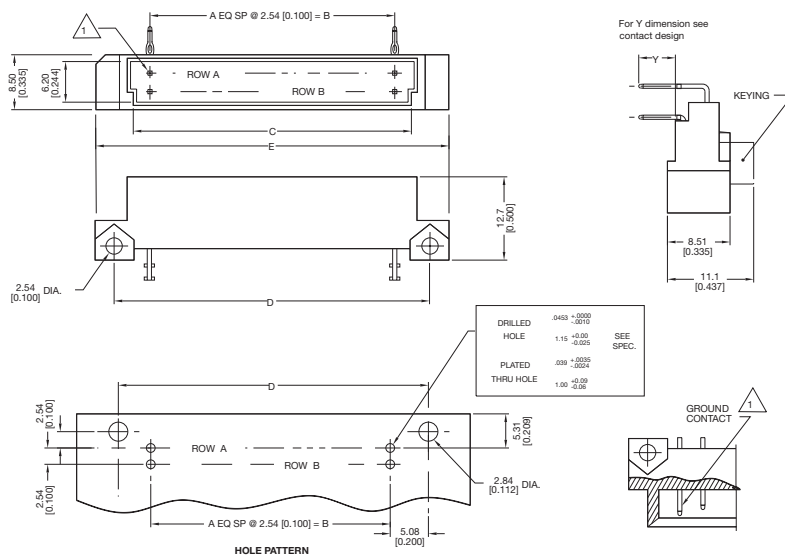
16 contacts, row a loading only



30 + 2 contacts, fully loaded with ground in A1 & A16

△ denotes ground pin

### DIMENSIONS



Assembly Tool: 06 8458 9221 00 000 (see page 67)

Unit: millimeters (inches)

| No. Contact Positions | Contact Rows | A  | B                | C                | D                | E                |
|-----------------------|--------------|----|------------------|------------------|------------------|------------------|
| 32                    | 2 (2 x 16)   | 15 | 38.10<br>(1.500) | 44.55<br>(1.754) | 48.26<br>(1.900) | 53.34<br>(2.100) |